

**OKLAHOMA STATE UNIVERSITY COLLEGE OF EDUCATION
MATH ENRICHMENT CAMP
DEVELOPING ALGEBRAIC THINKING**

325R Willard Hall Stillwater, OK 74078 • 405-744-6254 • Fax 405-744-7713

OSU College of Education Math Enrichment Camp

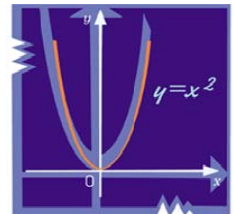
Date: July 20-24, 2009
Time: 9:00 a.m.—12 p.m.
Where: 107 Willard Hall
Who: Students who have completed grades
4-7 as of 5/31/09
Cost: \$60



Enrollment is limited to 24 campers in each camp.
Enrollment is first-come, first-served.

Campers will improve their ability to think algebraically through searching for patterns and relationships, making predictions and conjectures, mathematical modeling, and exploring the multiple representations of functions.

Campers will participate in a variety of learning opportunities!
Opportunities include hands-on activities, mathematical games,
and use of technology such as graphing calculators.



Sponsored by OSU College of Education

For more information contact:
Candace Thrasher, Education Outreach @
405-744-6254
or

Dr. Juliana Utley, Professor of Mathematics Education @
405-744-8111.

Download your enrollment packet at www.okstate.edu/education/summercamp